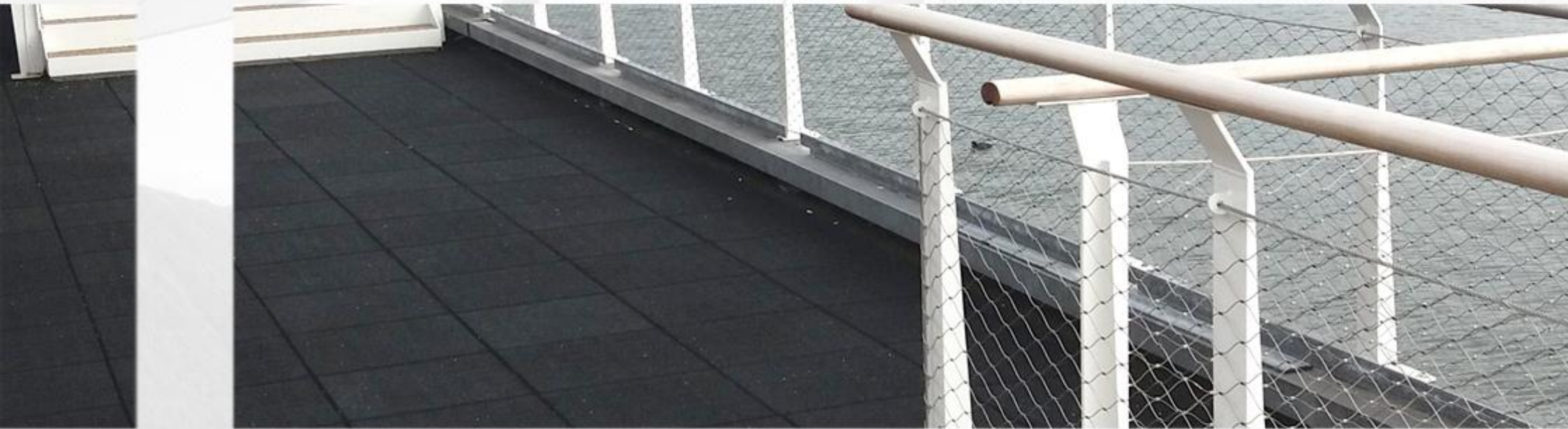




BZ WIRE MESH PRODUCTS CO., LTD



Flexible Cable Mesh



◆Products Introduce



Flexible cable mesh is the characteristic leading product of BZ Wire Mesh Plant which has been manufacturing the product since 1991. The Plant's independent developed equipment and skilled technique can ensure high quality products and sound service worldwide.

Flexible cable mesh is made from wire rope in various material type like SUS304, SUS304L, SUS316, SUS316L etc. and two main strand structures: 7*7 and 7*19. Our mesh products are supplied in three main series according to different weave-types: Inter-woven Type, Ferrule Type and Square Hole Type. The ferrule type series are sub-divided into aluminum alloy mesh and stainless steel mesh by the material of the ferrule.

Also, BZ company can color the flexible cable mesh by special processes, we can make the mesh into Black, Bronze, etc.



◆Products Types

●Ferrule Type

The flexible cable mesh, especially the ferrule type mesh, are more used in fields like balustrades on bridges and staircases, large barrier fences, and building facade trellis systems. As an emerging product on architectural decoration and protection, flexible cable mesh has provided the modern architectural decoration and horticulture engineering with a new and stylish element, which are getting more and more appreciated by designers and clients all over the world.



●Inter-woven Type

Flexible cable mesh, inter-woven type in particular, is usually used in animal or bird cages, which is also called zoo mesh. The mesh has strong tensile strength and high flexibility, high transparency and wide span. The flexible s.s. cable mesh has unreplaceable advantages compared with other mesh products in many aspects like practicability, security, aesthetic property and durability etc.





◆The Technical Details of Flexible cable mesh

● Design&Installation

Normally the zoo mesh needs to be installed in huge areas, so the mostly used design is the steel cable structures, build the structure by columns and cable, and then fix the cable mesh along with the cable system. BZWIREMESH can provide the material of cable system, including the cable, accessories and other material needed for the installation.

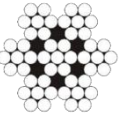
If the enclosure is not in large dimensions, the structure can be built by steel or other material, then the cable mesh can be installed inside the frame.

But it needs to be noticed that, ss cable mesh has to be fixed in a stable frame in all the directions, so that the mesh can be spread and get to the shape we need.

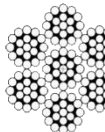


● The normal break of SS cable

BZWIREMESH use high quality ss cable to produce the cable mesh, following is the normal break for each kinds of cable we used.

Cable Diameter	Cable Strand	Material	Section
1.2mm	7*7	SS304	
1.2mm	7*7	SS316	
1.5mm	7*7	SS304	
1.5mm	7*7	SS316	
1.6mm	7*7	SS304	
1.6mm	7*7	SS316	
2.0mm	7*7	SS304	
2.0mm	7*7	SS316	



Cable Diameter	Cable Strand	Material	Section
2.5mm	7*19	SS304	
2.5mm	7*19	SS316	
3.0mm	7*19	SS304	
3.0mm	7*19	SS316	
3.2mm	7*19	SS304	
3.2mm	7*19	SS316	
4.0mm	7*19	SS304	
4.0mm	7*19	SS316	
4.2mm	7*19	SS304	
4.2mm	7*19	SS316	
5.0mm	7*19	SS304	
5.0mm	7*19	SS316	



- **Irregular Shape**

For the huge span animal enclosures, it is very common to find special shape area. For those parts, BZWIREMESH can produce the mesh into the irregular shape according to the drawings, to meet the requirement of design and installation.



- **Coloring**

BZWIREMESH can treat the cable mesh with special process to make the mesh into black color and bronze color. Those color can reduce the shininess of the mesh, it can protect the animals in the enclosures, also make the mesh more transparent, so the visitors will get better impression.





◆Normal Specifications

Flexible Stainless Steel Cable Mesh (Ferrule Type)				
Item No.s	Cable Diameter		Mesh Opening Size (W×H)	
	inch	mm	inch	mm
BZ-32120F	1/8	3.2	4.75 x 8.23	120 x 207.8
BZ-32102F	1/8	3.2	4 x 6.9	102 x 176.7
BZ-3290F	1/8	3.2	3.55 x 6.15	90 x 156
BZ-3276F	1/8	3.2	3 x 5.2	76 x 131.6
BZ-3251F	1/8	3.2	2 x 3.46	51 x 88.3
BZ-24102F	3/32	2.4	4x6.9	102x176.7
BZ-2490F	3/32	2.4	3.55x6.15	90x 156
BZ-2476F	3/32	2.4	3 x 5.2	76x 131.6
BZ-2460F	3/32	2.4	2.4x 4.16	60x 104
BZ-2451F	3/32	2.4	2x3.46	51 x 88.3
BZ-2076F	5/64	2.0	3 x 5.2	76 x 131.6
BZ-2060F	5/64	2.0	2.4x 4.16	60 x 104
BZ-2051F	5/64	2.0	2 x 3.46	51 x 88.3
BZ-2038F	5/64	2.0	1-1/2 x 2.6	38 x 65.8
BZ-1676F	1/16	1.6	1.2 x2.08	76 x 131.6
BZ-1651F	1/16	1.6	2x 3.46	51 x 88.3
BZ-1638F	1/16	1.6	1-1/2 x 2.6	38 x 65.8
BZ-1630F	1/16	1.6	1.2x2.08	30 x 52
BZ-1625F	1/16	1.6	1 x 1.73	25.4 x 44
BZ-1238F	3/64	1.2	1-1/2x2.6	38 x 65.8
BZ-1230F	3/64	1.2	1.2 x 2.08	30 x 52
BZ-1225F	3/64	1.2	1 x 1.73	25.4 x 44
BZ-1220F	3/64	1.2	4/5 x 1.39	20 x 34.6

Flexible Stainless Steel Cable Mesh (Inter-woven Type)				
Item No.s	Cable Diameter		Mesh Opening Size	
	inch	mm	inch	mm
BZ-3212W	1/8	3.2	4.75 x 4.75	120 x 120
BZ-3210W	1/8	3.2	4 x 4	102 x 102
BZ-3290W	1/8	3.2	3.55 x 3.55	90 x 90
BZ-3276W	1/8	3.2	3 x 3	76 x 76
BZ-3250W	1/8	3.2	2 x 2	51 x 51
BZ-2410W	3/32	2.4	4 x 4	102 x 102
BZ-2490W	3/32	2.4	3.55 x 3.55	90 x 90
BZ-2476W	3/32	2.4	3 x 3	76 x 76
BZ-2460W	3/32	2.4	2.4 x 2.4	60 x 60
BZ-2450W	3/32	2.4	2 x 2	51 x 51
BZ-2076W	5/64	2.0	3 x 3	76 x 76
BZ-2060W	5/64	2.0	2.4 x 2.4	60 x 60
BZ-2050W	5/64	2.0	2 x 2	51 x 51
BZ-2038W	5/64	2.0	1-1/2 x 1-1/2	38 x 38
BZ-1676W	1/16	1.6	3 x 3	76 x 76
BZ-1650W	1/16	1.6	2 x 2	51 x 51
BZ-1638W	1/16	1.6	1-1/2 x 1-1/2	38 x 38
BZ-1630W	1/16	1.6	1.2 x 1.2	30 x 30
BZ-1625W	1/16	1.6	1 x 1	25.4 x 25.4
BZ-1238W	3/64	1.2	1-1/2 x 1-1/2	38 x 38
BZ-1230W	3/64	1.2	1.2 x 1.2	30 x 30
BZ-1225W	3/64	1.2	1 x 1	25.4 x 25.4
BZ-1220W	3/64	1.2	4/5 X 4/5	20 x 20



◆Products Applications



- Handrail Infills
- Mesh Facades
- Safety Mesh
- Green Wall
- Zoo Enclosures
- Safety net bag





◆The Service We Provide

BZWIREMESH can provide the following service for you.



- We can help our clients calculate the cost during design and tender stage.

- We can give advice to help our clients improve and perfect the design.

- We can provide the mesh in the required dimensions and shape.

- We can provide the material for steel cable structure including the accessories.

- We can send our technicians to our client's site and guidance the installation.