

Expanded Metal Mesh is produced by punching and expanding process, it is a commonly used material as facades. It is environmental with no pollution, very durable and convenient installation, normally used as the building facade and ceiling.

## Normal Installation Options for Expanded Metal Mesh

There are many installation options for Expanded Metal Mesh, such as frame installation, welding installation, bolting installation, and split joint. The frame installation is mostly used and easiest for installation.



Building facade in Shanghai(1500\*3000mm Expanded Metal Mesh)



PVDF coating Expanded Metal Mesh

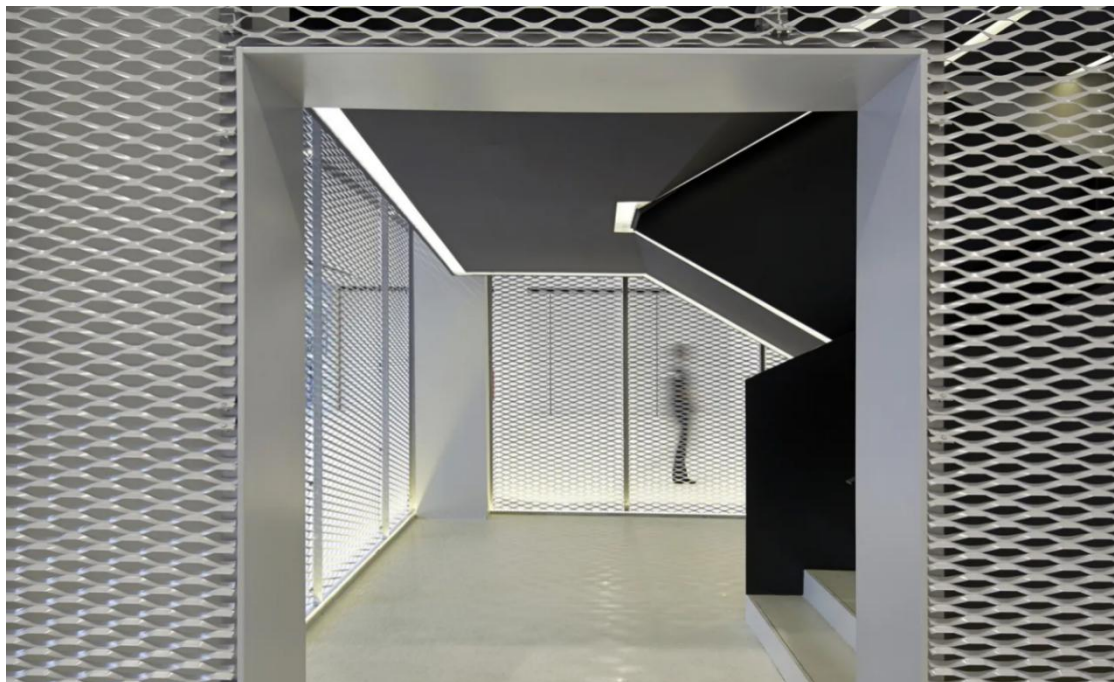




Expanded Metal Mesh used as facades

As the drawings above, firstly we add a metal frame to the wall, then fix the Expanded Metal Mesh to the frame by bolt. This is the common way to install the Expanded Metal Mesh facade. In profile, the structure is wall-metal frame-Expanded Metal Mesh. Before installation, measure the length and width of the wall, then make a frame according to the wall, and finally fix the Expanded Metal Mesh to the frame by bolts.

The plate thickness for Expanded Metal Mesh used as facades are normally 2 to 3mm, the material can be galvanized steel, aluminum and stainless steel, the surface treatment normally is PVDF coating, the color can be various. Mostly used color is White, Grey and Brick red. The frame used normally in aluminum, which is light, tough and easy for installation.

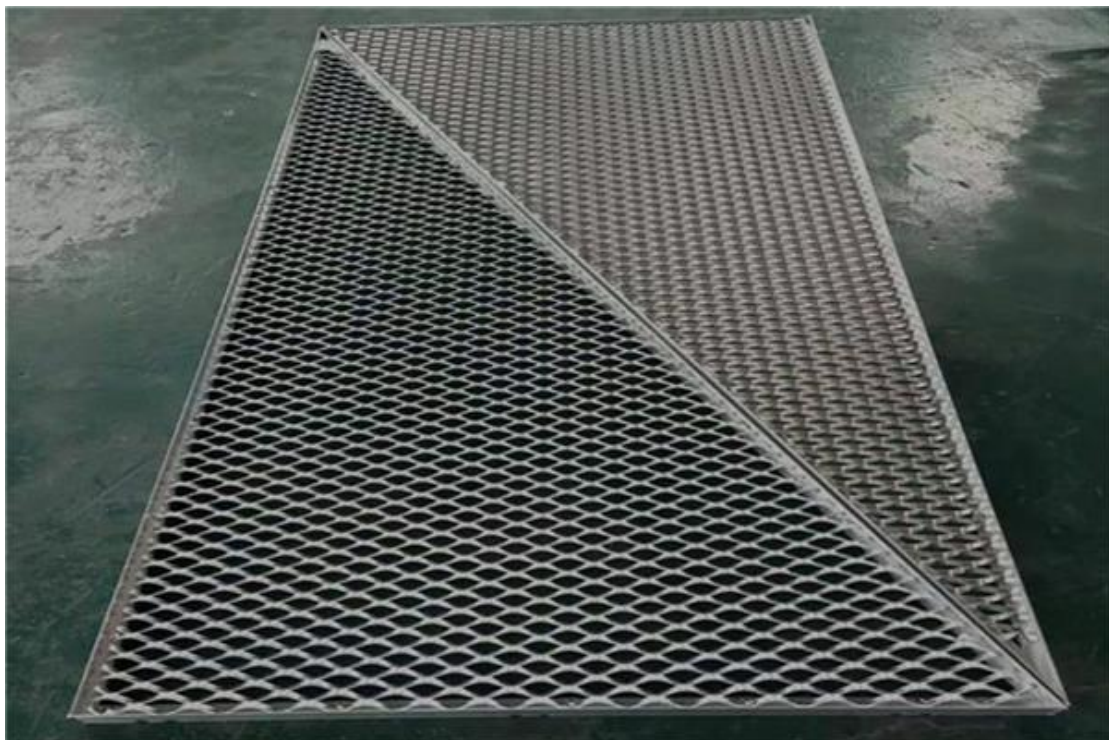


The Expanded Metal Mesh used for inner-decoration can be stalled in metal frame-Expanded Metal Mesh-glass structure, mostly used as the space division.





Ceiling installation: welding the Expanded Metal Mesh to the frame then install the frames



Split joint

According to the different design and requirements, the installation options can be various. BZWIREMESH can offer the suggestions and accessories for installation.