



Decorative Woven Wire Mesh Installation Graphic



Most of the metal woven wire mesh can not be curved. It need to add border or frames before installation, and attache ear plates or steel angle on the four sides, then fix the frame to the wall or brackets by bolts.



An example of woven mesh used as fence: firstly fix the mesh to the frame, and connect the frame with mesh to the structure during installation, this can avoid welding process on site, and it is a convenient installation way.

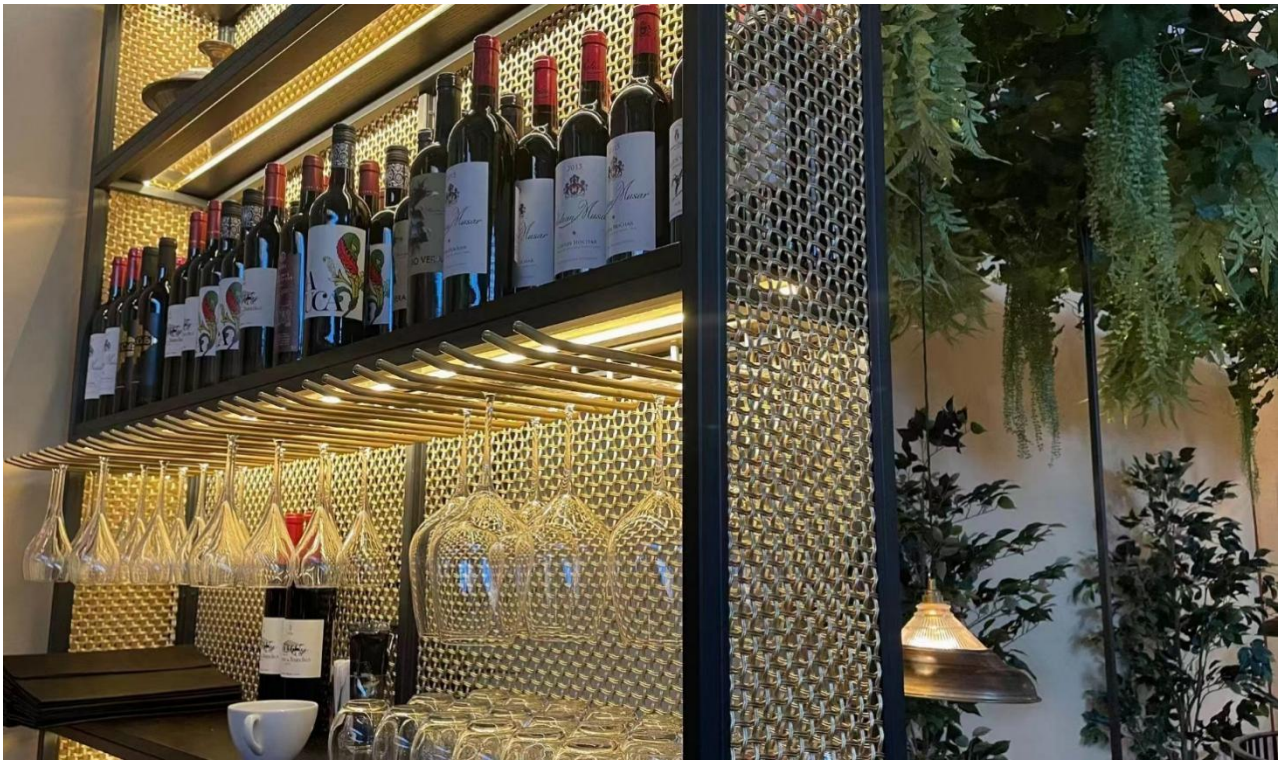


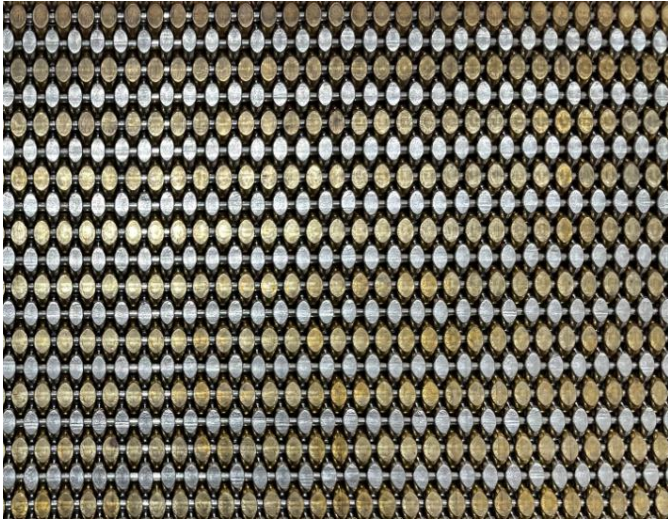


An example of partition:fix the mesh in the middle of frame



An example used in the bar counter: fix the mesh to the frames.it is a wine cabinet in modern style,with very good transparency and shows a colorful lighting effect.





Before install the elevator decoration mesh, need to cover the edges of mesh first, and fix the mesh to the elevator elevation.

